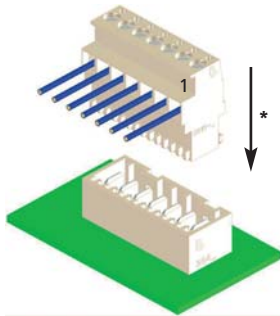
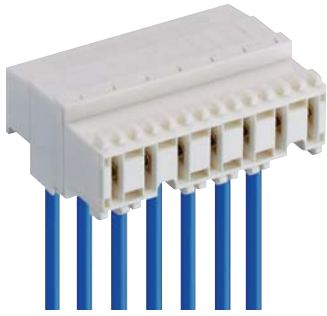
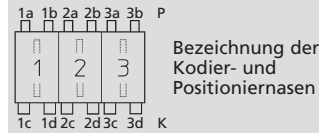


Kodierungen nach RAST 5 für Macromodul-Steckverbinder 3615, 3615-1, 3615-2, 3615-3
Keyings according to RAST 5 for Macromodul connector 3615, 3615-1, 3615-2, 3615-3
Codages suivant RAST 5 pour connecteurs Macromodul 3615, 3615-1, 3615-2, 3615-3



3615 3615-1
3615-2 3615-3

Für diese Steckverbinder schlägt Lumberg die unten dargestellten Kodierungen vor. Weitere Kodierungen sind auf Anfrage möglich.



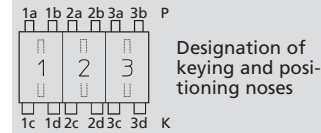
Steckweise indirekt, mit RAST-5-Stiftleiste:

Kodierung durch Kodiernasen am Steckverbinder und entsprechende Öffnungen an der Stiftleiste

Alle Zeichnungen in Steckrichtung (*) gesehen

3615 3615-1
3615-2 3615-3

For these connectors, Lumberg proposes the keyings listed below. Further keyings are possible on request.



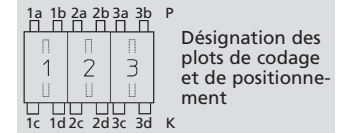
Indirect connection, with RAST 5 pin header:

Keying by means of keying noses at the connector and matching gaps at the pin header

All drawings in view of mating direction (*)

3615 3615-1
3615-2 3615-3

Pour ces connecteurs Lumberg propose les codages ci-dessous. Autres codages sont possibles sur demande.



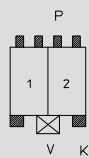
Connexion indirecte, avec réglette à broches RAST 5 :

Codage par plots de codage au connecteur et ouvertures correspondantes à la réglette à broches

Tous dessins vus dans le sens d'enfichage (*)

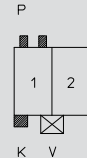
2
 2-polig
 2 poles
 2 pôles

3615 02 K00



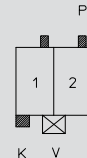
Kodierung/keying/codage:
 P 1ab 2ab, K 1c 2d, V 1/2

3615 02 K04



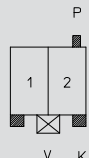
Kodierung/keying/codage:
 P 1ab, K 1c, V 1/2

3615 02 K09



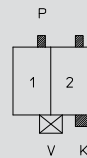
Kodierung/keying/codage:
 P 1b 2b, K 1c, V 1/2

3615 02 K15



Kodierung/keying/codage:
 P 2b, K 1c 2d, V 1/2

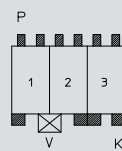
3615 02 K35



Kodierung/keying/codage:
 P 1b 2b, K 2d, V 1/2

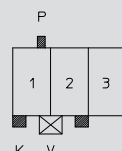
3
 3-polig
 3 poles
 3 pôles

3615 03 K00



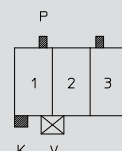
Kodierung/keying/codage:
 P 1ab 2ab 3ab, K 1c 2d 3cd, V 1/2

3615 03 K01



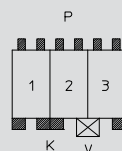
Kodierung/keying/codage:
 P 1b, K 1c 2d, V 1/2

3615 03 K03



Kodierung/keying/codage:
 P 1b 3a, K 1c, V 1/2

3615 03 K90

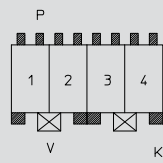


Kodierung/keying/codage:
 P 1ab 2ab 3ab, K 1cd 2c 3d, V 2/3

4

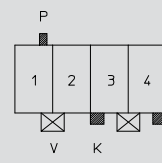
4-polig
 4 poles
 4 pôles

3615 04 K00



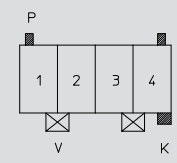
Kodierung/keying/codage:
 P 1ab 2ab 3ab 4ab, K 1c 2d 3c 4d,
 V 1/2 3/4

3615 04 K01



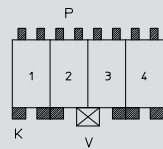
Kodierung/keying/codage:
 P 1b, K 3c 4d, V 1/2 3/4

3615 04 K03



Kodierung/keying/codage:
 P 1a 4b, K 4d, V 1/2 3/4

3615 04 K90

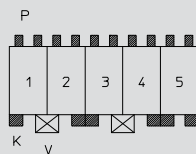


Kodierung/keying/codage:
 P 1ab 2ab 3ab 4ab, K 1cd 2c 3d 4cd,
 V 2/3

5

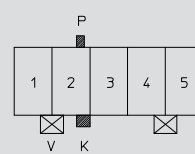
5-polig
 5 poles
 5 pôles

3615 05 K00



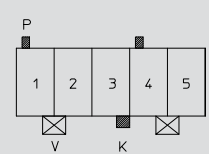
Kodierung/keying/codage:
 P 1ab 2ab 3ab 4ab 5ab, K 1c 2d 3c
 4d 5cd, V 1/2 3/4

3615 05 K02



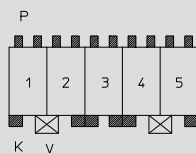
Kodierung/keying/codage:
 P 2b, K2d, V 1/2 4/5

3615 05 K04



Kodierung/keying/codage:
 P 1a 4a, K 3d, V 1/2 4/5

3615 05 K90

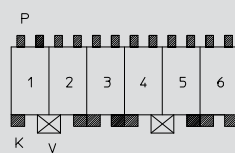


Kodierung/keying/codage:
 P 1ab 2ab 3ab 4ab 5ab, K 1c 2d 3cd
 4c 5d, V 1/2 4/5

6

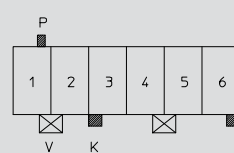
6-polig
 6 poles
 6 pôles

3615 06 K00



Kodierung/keying/codage:
 P 1ab 2ab 3ab 4ab 5ab 6ab, K 1c 2d
 3cd 4c 5d 6cd, V 1/2 4/5

3615 06 K01

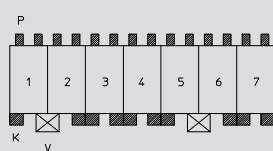


Kodierung/keying/codage:
 P 1b, K 3c, 6d, V 1/2 4/5

7

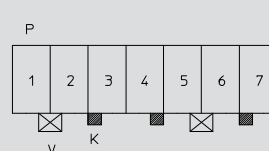
7-polig
 7 poles
 7 pôles

3615 07 K00



Kodierung/keying/codage:
 P 1ab 2ab 3ab 4ab 5ab 6ab 7ab,
 K 1c 2d 3cd 4cd 5c 6d 7cd, V 1/2 5/6

3615 07 K01



Kodierung/keying/codage:
 K 3c 4d 7c, V 1/2 5/6